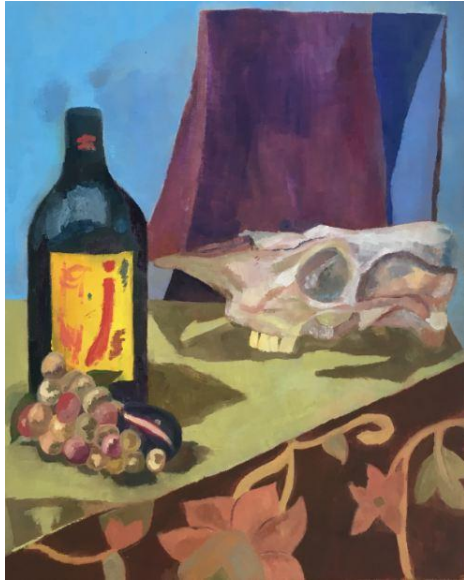


Color, Content, and Viewer's Perception



Lori Fogg
Mentor: Nancy Gladwell
Lyme Academy Campus

During this summer I sought out to explore the relationship between the color palette of a painting and the objects represented in it and how these two factors affect the viewer's connection with that work. I chose to create six oil paintings in dimensions of 16"x20". There were three different genres being illustrated in this experiment; a still life, a self-portrait, and a landscape. Three of these paintings were representationally from direct observation and the other three were painted abstractly I used the color palettes that I observed from life to inspire the palettes of the abstract works.

